

DANIEL MALIG

Shot Breakdown

W: www.danielmalig.com
E: demdesigns@gmail.com
P: +1 323 251 9465
A: 6439 Capps Ave. Roscda, CA 91335



01

- ▶ Key Lighter
Toolkit: Houdini, 3Delight, Nuke



02

- ▶ Key Lighter
Toolkit: Houdini, 3Delight, Nuke



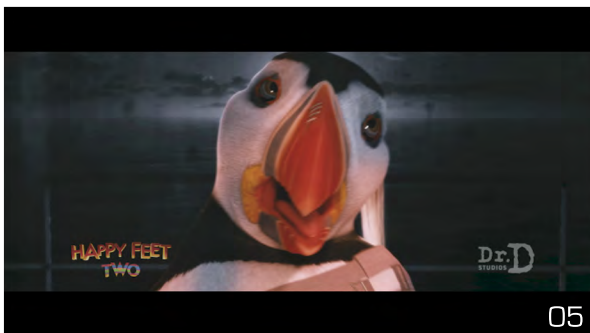
03

- ▶ Key Lighter, Assisted in Look Dev
Toolkit: Houdini, 3Delight, Nuke



04

- ▶ Lighting of Ocean
Toolkit: Houdini, 3Delight



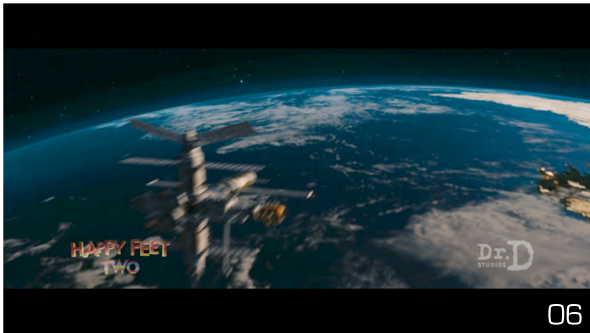
05

- ▶ Lighting of Ocean
Toolkit: Houdini, 3Delight

DANIEL MALIG

Shot Breakdown

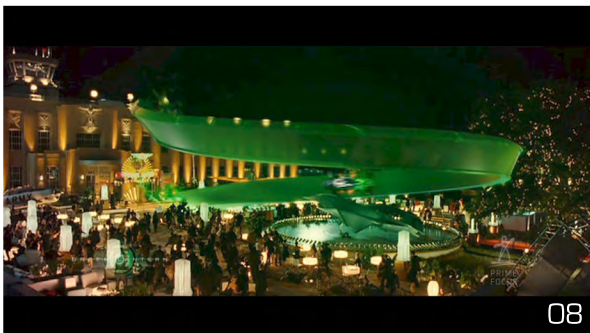
W: www.danielmalig.com
E: demdesigns@gmail.com
P: +1 323 251 9465
A: 6439 Capps Ave. Roseda, CA 91335



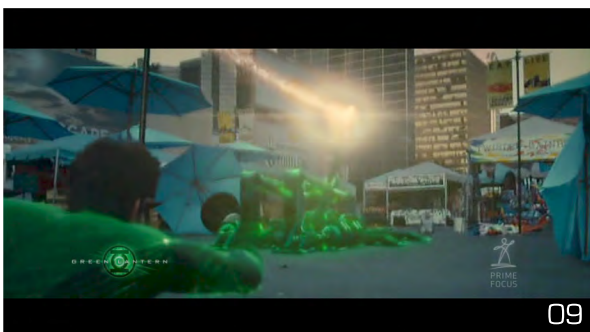
- ▶ Key Lighter for Space Station
Toolkit: Houdini, 3Delight, Nuke



- ▶ Compositing VFX Assets Over Filmed Plate,
Finessed Stereo Composite for Final Delivery
Toolkit: Fusion



- ▶ Compositing VFX Assets Over Filmed Plate,
Finessed Stereo Composite for Final Delivery
Toolkit: Fusion



- ▶ Compositing VFX Assets Over Filmed Plate,
Finessed Stereo Composite for Final Delivery
Toolkit: Fusion

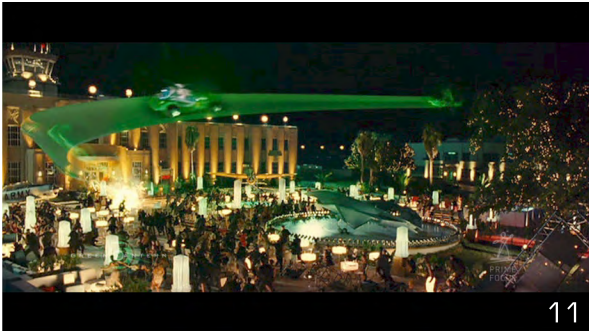


- ▶ Compositing VFX Assets Over Filmed Plate,
Finessed Stereo Composite for Final Delivery
Toolkit: Fusion

DANIEL MALIG

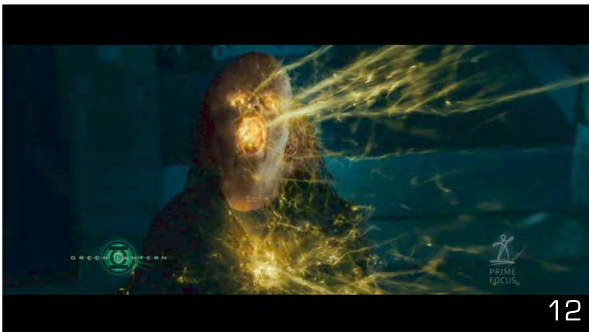
Shot Breakdown

W: www.danielmalig.com
E: demdesigns@gmail.com
P: +1 323 251 9465
A: 6439 Capps Ave. Roseda, CA 91335



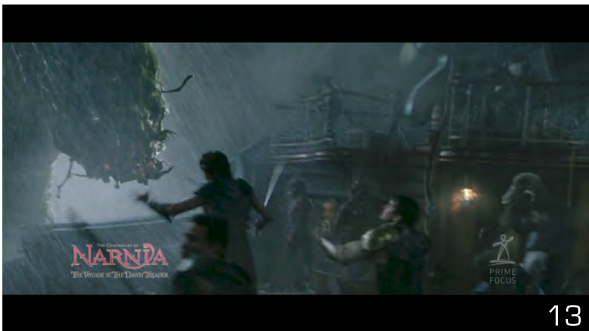
11

- ▶ Composited VFX Assets Over Filmed Plate,
Finessed Stereo Composite for Final Delivery
Toolkit: Fusion



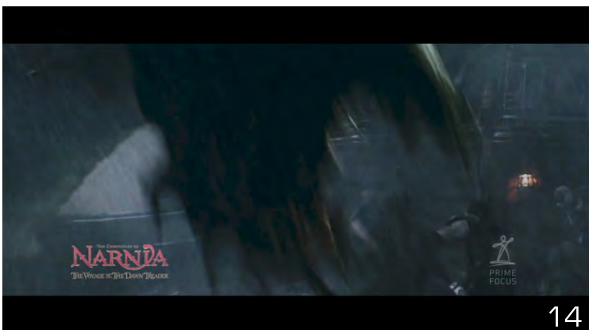
12

- ▶ Composited VFX Assets Over Filmed Plate,
Finessed Stereo Composite for Final Delivery
Toolkit: Fusion



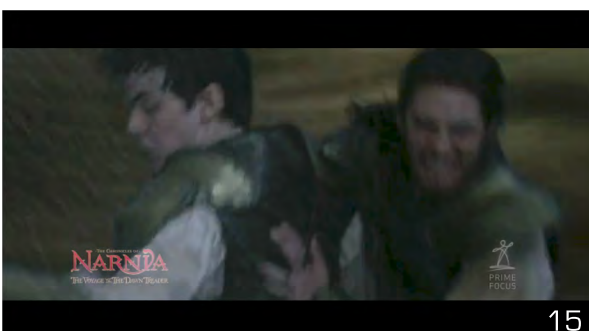
13

- ▶ Composited VFX Assets Over Filmed Plate,
Created 2D Z-Depth for 3D Depth Generation,
Finessed Stereo Composite for Final Delivery
Toolkit: Fusion, Nuke



14

- ▶ Composited VFX Assets Over Filmed Plate,
Created 2D Z-Depth for 3D Depth Generation,
Finessed Stereo Composite for Final Delivery
Toolkit: Fusion, Nuke



15

- ▶ Composited VFX Assets Over Filmed Plate,
Created 2D Z-Depth for 3D Depth Generation
Toolkit: Fusion, Nuke

DANIEL MALIG

Shot Breakdown

W: www.danielmalig.com
E: demdesigns@gmail.com
P: +1 323 251 9465
A: 6439 Capps Ave. Roseda, CA 91335



- ▶ Compositing VFX Assets Over Filmed Plate, Finessed Stereo Composite for Final Delivery
Toolkit: Fusion, Nuke



- ▶ Compositing VFX Assets Over Filmed Plate, Finessed Stereo Composite for Final Delivery
Toolkit: Fusion, Nuke



- ▶ Asset Prep, Look Dev, Lighting, Compositing
Toolkit: Maya, Mental Ray, Photoshop, After Effects, Nuke



- ▶ Asset Prep, Camera Animation, Look Dev, Lighting, Compositing
Toolkit: Maya, Mental Ray, Photoshop, After Effects, Nuke

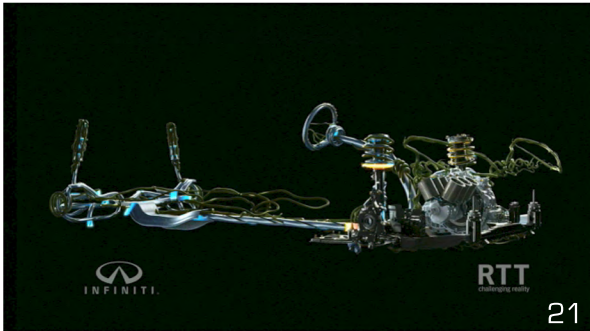


- ▶ Asset Prep, Camera Animation, Look Dev, Lighting, Compositing
Toolkit: Maya, Mental Ray, Photoshop, Nuke

DANIEL MALIG

Shot Breakdown

W: www.danielmalig.com
E: demdesigns@gmail.com
P: +1 323 251 9465
A: 6439 Capps Ave. Reseda, CA 91335



- Modeling, Animation, Look Dev, Lighting, Compositing
Toolkit: Maya, ZBrush, Mental Ray, Photoshop, Nuke



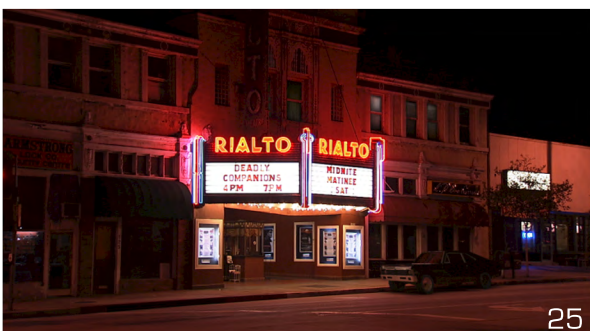
- Look Dev, Lighting, Compositing
Toolkit: Maya, Mental Ray, Nuke



- Look Dev, Lighting, Compositing
Toolkit: Maya, Mental Ray, Photoshop, Nuke



- Look Dev, Lighting, Compositing
Toolkit: Maya, Mental Ray, Nuke

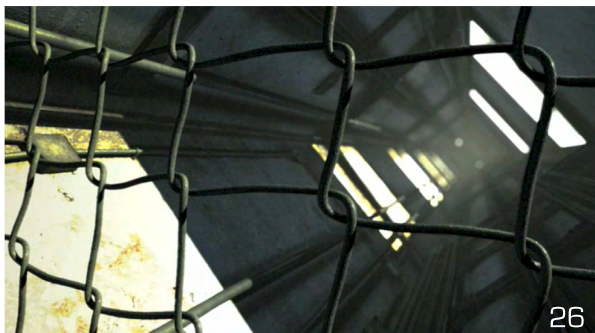


- Look Dev, Lighting, Compositing
Toolkit: Maya, Mental Ray, Nuke

DANIEL MALIG

Shot Breakdown

W: www.danielmalig.com
E: demdesigns@gmail.com
P: +1 323 251 9465
A: 6439 Capps Ave. Reseda, CA 91335



- Modeling, Animation, Look Dev, Lighting, Compositing
Toolkit: Maya, Mental Ray, Photoshop, Nuke